



**53 Berryhill Crescent**  
Wishaw

**Offers over £149,995**











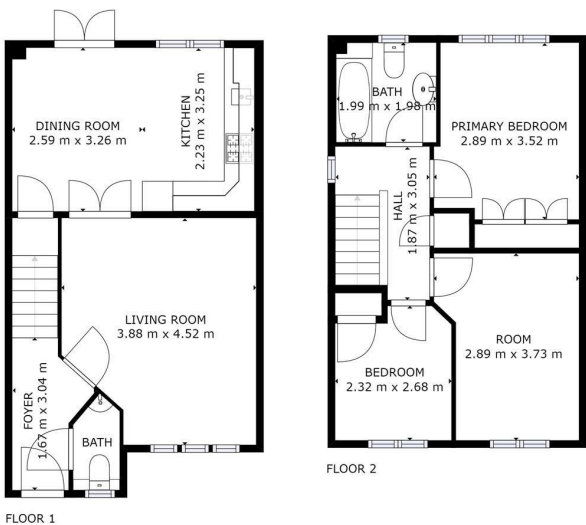
Fred Estate Agents are delighted to bring to the market, this spacious three bedroom semi-detached property within the town of Wishaw.

The ground floor of this property offers a large and airy lounge with French doors leading on to a spacious dining kitchen. The ground floor also benefits from a W.C. off the hallway.

Upstairs, the property offers three generously sized bedrooms, with the master benefitting from fitted wardrobes. The family bathroom is bright and airy.

The property offers excellent outdoor space with driveway parking and a large enclosed rear garden.

Wishaw is perfectly located for the commuter with access to the M8/M74 just minutes away. Wishaw provides bus and rail links to the surrounding area, as well as Glasgow and Edinburgh. Wishaw also offers a great selection of restaurants, bars, retail parks and sporting facilities.



GROSS INTERNAL AREA  
FLOOR 1: 40 m<sup>2</sup>, FLOOR 2: 39 m<sup>2</sup>  
TOTAL: 79 m<sup>2</sup>  
SIZES AND DIMENSIONS ARE APPROXIMATE, ACTUAL MAY VARY.

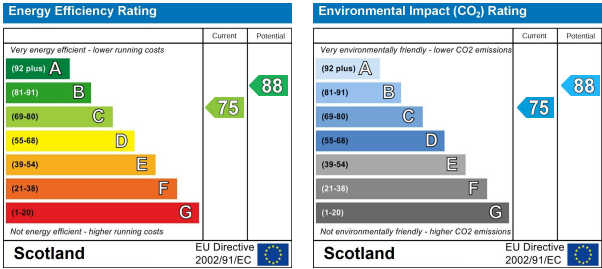


## Viewing

Please contact us on 01698 305618 if you wish to arrange a viewing appointment for this property or require further information.

These particulars, whilst believed to be accurate are set out as a general outline only for guidance and do not constitute any part of an offer or contract. Intending purchasers should not rely on them as statements of representation of fact, but must satisfy themselves by inspection or otherwise as to their accuracy. No person in this firms employment has the authority to make or give any representation or warranty in respect of the property.

## Energy Efficiency Graph



438 Brandon Street, Motherwell, North Lanarkshire, ML1 1XA  
01698 305618 | info@fredestateagents.co.uk